

# Refinish Catalog

**ANEST  
IWATA**



*Car Painted by Armando Serrano*



**Spray Guns  
& Accessories**

# ANEST IWATA SPRAY GUN EQUIPMENT



ANEST IWATA is the North American subsidiary of ANEST IWATA Corporation in Japan, a leading manufacturer specializing in painting equipment, turnkey coating systems, air compressors and high-end dry vacuum pumps.

As part of the world-class operation we strive to exceed the highly advanced needs of North American industries with innovative, state-of-the-art technologies and services.

As the sole importer of ANEST IWATA finishing equipment into the North American market specializing in painting equipment and turnkey coating systems we continue to introduce and produce the most effective finishing equipment in the world.



**Anest Iwata products are sold exclusively through Automotive Spray Equipment Technologies, LLC.**



Model	WS400 EVOTECH	W400-LV	LS400 ENTECH	LPH400- LV/LVB/LVX	LPH300
	suitable for	suitable for	suitable for	suitable for	suitable for
Clear Coat	X	X	X	X	
Base Coat	OBS NOZZLE	X	X	X	
Primer Sealer		X			X
Primer Surfacer					X
Small Damage Repair					

# ANEST IWATA SPRAY GUN EQUIPMENT

## High Transfer Efficient Spray Technology

Our patented LV Technology nozzle design features higher fluid delivery that facilitates faster, smoother application. The result is higher transfer efficiency rate, resulting in greater material savings.



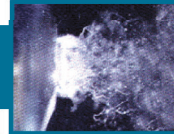
**LV Technology Spray Nozzle**



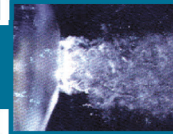
0 PSI



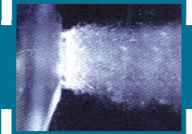
0.7 PSI



1.5 PSI



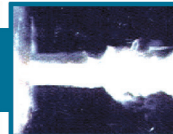
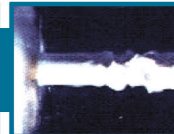
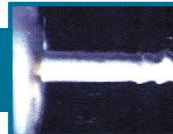
2.9 PSI



4.4 PSI



**Non-LV Spray Nozzle**



Model	LPH101-LV	LPH200-LV	LPH-80	RG3L	LPH-50	AZ3 HVLP-S IMPACT
	suitable for	suitable for	suitable for	suitable for	suitable for	suitable for
Clear Coat						
Base Coat						
Primer Sealer						X
Primer Surfacer	X	X				X
Small Damage Repair			X	X	X	

# COMPLIANT SPRAY GUNS



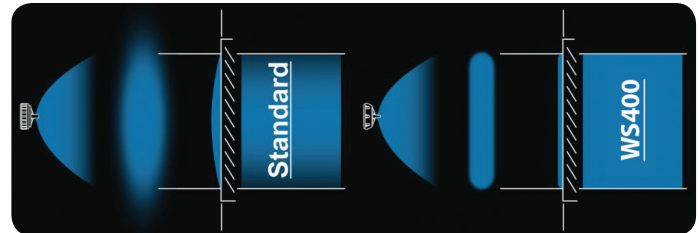
with optional plastic gravity feed cup



## SUPERNOVA WS400 EVOTECH

### Features

- EPA NESHAP 40 CFR, part 63 subpart 6H compliant
- Large, uniform spray pattern
- Concentrated fine atomization
- Large fan tulip pattern
- Very fine atomization
- Standard for clear coats
- Fast application speed
- Superior transfer efficiency
- Compatible with the 3M PPS cup system (Adapter Type 43)
- Repair Service Kit Part #5652



The SUPERNOVA delivers a consistent droplet size when atomizing. This, combined with the flat, even SUPERNOVA pattern, helps reduce common application issues. All SUPERNOVA guns are equipped with stainless steel fluid passages ideal for any type of material, solventborne or waterborne.



600ml Plastic Cup  
PCG600P-2 #6039



700ml Aluminum Cup  
PCG7D-2 #6032D



1000ml Aluminum Cup  
PCG10D-2 #6038D

MODEL	GUN ONLY	600ml PLASTIC CUP	700ml ALUMINUM CUP	1000ml ALUMINUM CUP	NOZZLE mm (inch)	PSI	CFM	FLUID OUTPUT ml/mm	PATTERN WIDTH mm (inch)	AIR CAP MODEL	WEIGHT g (lbs)
WS400-1201 HD	5900	5901	5902	5903	1.2 (0.047)	29	12.57	200	365 (14.38)	WS-400-01	423 (0.93)
WS400-OBS	5920	5921	5922	5923	1.3 (0.051)	29	12.57	160	365 (14.38)	WS-400-01	423 (0.93)
WS400-1301 HD	5905	5906	5907	5908	1.3 (0.051)	29	12.57	220	365 (14.38)	WS-400-01	423 (0.93)
WS400-1401 HD	5910	5911	5912	5913	1.4 (0.055)	29	12.57	240	370 (14.57)	WS-400-01	423 (0.93)
WS400-1501 HD	5915	5916	5917	5918	1.5 (0.059)	29	12.57	260	370 (14.57)	WS-400-01	423 (0.93)

## W400-LV CLASSIC PLUS SERIES

### Features

- Center post gravity feed high transfer efficiency spray gun combines LV Technology with High-TEC standards
- Tulip inspired spray pattern complies with regulations for the application of coatings within specific areas and approval is subject to the conditions of your regional air quality agency
- ANEST IWATA W400-LV spray gun sold and distributed within the jurisdiction of regional air quality districts is subject to the local rule
- Please visit [www.anestiwata.com](http://www.anestiwata.com) for current approved regions
- Compatible with the 3M PPS cup system (Adapter Type 2)
- Repair Service Kit Part #5650

# Classic plus Series



with optional aluminum gravity feed cup



600ml Plastic Cup  
PCG6PM #6000



700ml Aluminum Cup  
SST Fluid Joint  
PCG7EM #6033E



1000ml Aluminum Cup  
SST Fluid Joint  
PCG10EM #6034E



MODEL	GUN ONLY	600ml PLASTIC CUP	700ml ALUMINUM CUP	1000ml ALUMINUM CUP	NOZZLE mm (inch)	PSI	CFM	PATTERN WIDTH mm (inch)
W400LV-124G	4750	4751	4752	4753	1.2 (0.047)	20	10.0	249 (9.8)
Compliant with AK-1R2	4855	4856	4857	4858	1.2 (0.047)	20	10.0	249 (9.8)
W400LV-134G	4755	4756	4757	4758	1.3 (0.051)	20	10.0	269 (10.6)
Compliant with AK-1R2	4860	4861	4862	4863	1.3 (0.051)	20	10.0	269 (10.6)
W400LV-144G	4760	4761	4762	4763	1.4 (0.055)	20	10.0	290 (11.4)
Compliant with AK-1R2	4865	4866	4867	4868	1.4 (0.055)	20	10.0	290 (11.4)
W400LV-164G	4765	4766	4767	4768	1.6 (0.063)	20	10.0	305 (12.0)
Compliant with AK-1R2	4870	4871	4872	4873	1.6 (0.063)	20	10.0	305 (12.0)
W400LV-184G	4770	4771	4772	4773	1.8 (0.063)	20	10.0	325 (12.8)
Compliant with AK-1R2	4875	4876	4877	4878	1.8 (0.063)	20	10.0	325 (12.8)

# HVLP SPRAY GUNS

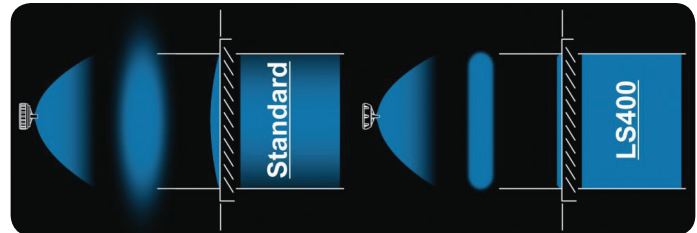
## SUPERNOVA LS400 ENTECH



with optional plastic gravity feed cup

### Features

- HVLP Technology - 10 PSI at the nozzle
- Concentrated coarse atomization
- Excellent for solvent or waterborne base coat application
- Large fan pattern
- Superior transfer efficiency
- Compatible with the 3M PPS cup system (Adapter Type 43)
- Repair Service Kit Part #5652



The SUPERNOVA delivers a consistent droplet size when atomizing. This, combined with the flat, even SUPERNOVA pattern, helps reduce common application issues. All SUPERNOVA guns are equipped with stainless steel fluid passages ideal for any type of material, solventborne or waterborne.



600ml Plastic Cup  
PCG600P-2 #6039



700ml Aluminum Cup  
PCG7D-2 #6032D



1000ml Aluminum Cup  
PCG10D-2 #6038D

MODEL	GUN ONLY	600ml PLASTIC CUP	700ml ALUMINUM CUP	1000ml ALUMINUM CUP	NOZZLE mm (inch)	PSI	CFM	FLUID OUTPUT ml/mm	PATTERN WIDTH mm (inch)	AIR CAP MODEL GREEN (10psi)	WEIGHT g (lbs)
LS400-1205	5930	5931	5932	5933	1.2 (0.047)	26	14.12	150	350 (13.75)	LS-400-05	423 (0.93)
LS400-1305	5935	5936	5937	5938	1.3 (0.051)	26	14.12	160	350 (13.75)	LS-400-05	423 (0.93)
LS400-1405	5940	5941	5942	5943	1.4 (0.055)	26	14.12	170	360 (14.18)	LS-400-05	423 (0.93)
LS400-1505	5945	5946	5947	5948	1.5 (0.059)	26	14.12	180	365 (14.38)	LS-400-05	423 (0.93)

# HVLP SPRAY GUNS

## LPH400-LV / LPH400-LVB / LPH400-LVX CLASSIC PLUS SERIES

### Features

- High material savings due to LV Technology
- Extremely low air requirement for a HVLP gun
- Pre-atomization technology with split nozzle
- Quality surface for easy cleaning
- Minimal wear parts for easy maintenance
- Compatible with the 3M PPS cup system (Adapter Type 2)
- Repair Service Kit Part #5650



L VX AIRCAP Patent Pending

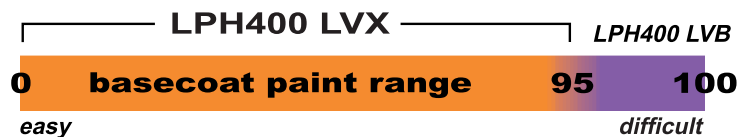
### LPH400-LVX

Designed to increase productivity for 90 to 95% of all basecoats.

L VB AIRCAP Patent Pending

### LPH400-LVB

Designed with excellent metallic control for the most difficult basecoats.



600ml Plastic Cup  
PCG6PM #6000



700ml Aluminum Cup  
SST Fluid Joint  
PCG7EM #6033E



1000ml Aluminum Cup  
SST Fluid Joint  
PCG10EM #6034E



with optional aluminum gravity feed cup

# Classic plus Series



3M PPS Type 2

MODEL	GUN ONLY	600ml PLASTIC CUP	700ml ALUMINUM CUP	1000ml ALUMINUM CUP	NOZZLE mm (inch)	PSI	CFM	PATTERN WIDTH mm (inch)
LPH400-124LV	5540	5541	5542	5543	1.2 (0.047)	16	9.5	259 (10.2)
LPH400-134LV	5640	5641	5642	5643	1.3 (0.051)	16	9.5	279 (11.0)
LPH400-144LV	5550	5551	5552	5553	1.4 (0.055)	16	9.5	290 (11.4)
LPH400-154LV	5535	5536	5537	5538	1.5 (0.059)	16	9.5	295 (11.6)
LPH400-164LV	5560	5561	5562	5563	1.6 (0.063)	16	9.5	300 (11.8)
LPH400-184LV	5570	5571	5572	5573	1.8 (0.071)	16	9.5	320 (12.6)
LPH400-134LVX	5660	5661	5662	5663	1.3 (0.051)	16	9.8	300 (11.8)
LPH400-144LVX	5670	5671	5672	5673	1.4 (0.055)	16	9.8	310 (12.2)
LPH400-154LVX	5680	5681	5682	5683	1.5 (0.059)	16	9.8	330 (13.0)
LPH400-134LVB	5700	5701	5702	5703	1.3 (0.051)	14	8.3	320 (12.6)
LPH400-144LVB	5705	5706	5707	5708	1.4 (0.055)	14	8.3	325 (12.8)
LPH400-154LVB	5710	5711	5712	5713	1.5 (0.059)	14	8.3	335 (13.2)

# PRIMER / SURFACER / SEALER

## LPH300

### Features

- Compact size and lighter weight reduces fatigue when spraying
- Full-size HVLP performance
- Unsurpassed in transfer efficiency for spraying primer and sealer
- Excellent for top coats, NGR stains, and industrial basecoats
- Produces an extremely smooth sealer finish to significantly reduce orange peel
- Flat, smooth fan pattern with a tight edge creates a soft transition edge when used for spot applications
- High transfer efficiency due to LV Technology means lower material cost per repair
- Compatible with the 3M PPS cup system (Adapter Type 43)
- Repair Service Kit Part #5650

with optional aluminum gravity feed cup



Optional  
150ml Aluminum Cup  
SST Fluid Joint  
PCG2D-2 #6030D



400ml Aluminum Cup  
SST Fluid Joint  
PCG4D-2 #6031D



700ml Aluminum Cup  
SST Fluid Joint  
PCG7D-2 #6032D



MODEL	GUN ONLY	400ml ALUMINUM CUP	700ml ALUMINUM CUP	NOZZLE mm (inch)	PSI	CFM	PATTERN WIDTH mm (inch)	IDEAL FOR
LPH300-124LV	3940	3941	3942	1.2 (0.047)	15	7.1	210 (8.3)	Sealer and/or Wetbed
LPH300-134LV	3955	3956	3957	1.3 (0.051)	15	7.1	220 (8.7)	Sealer and/or Wetbed
LPH300-144LV	3945	3946	3947	1.4 (0.055)	15	7.1	230 (9.1)	Sealer and/or Wetbed
LPH300-164LV	3950	3951	3952	1.6 (0.063)	19	8.5	230 (9.1)	Surfacer/Primer
LPH300-184LV	3960	3961	3962	1.8 (0.063)	19	8.5	230 (9.1)	Surfacer/Primer
LPH300-204LV	3965	3966	3967	2.0 (0.079)	19	8.5	230 (9.1)	Surfacer/Primer



## AIR GUNSA IMPACT AND HTE2/HV2

### Features

- Robust spray gun
- Flat and thin spray pattern with a fine atomization
- All wetted parts in stainless steel
- Replacement parts available
- Compatible with the 3M PPS cup system (Type 43)
- O-Ring Kit Part #9131

**Air-GunSA**  
ANEST IWATA Group



MODEL	GUN WITH 600ml PLASTIC CUP	NOZZLE mm (inch)	PSI	CFM	PATTERN WIDTH mm (inch)
<b>IMPACT</b>					
AZ3 HVLP-S 13	9270	1.3 (0.051)	28	10.83	280.0 (11.0)
AZ3 HVLP-S 14	9274	1.4 (0.055)	28	10.83	300.0 (11.8)
AZ3 HVLP-S 15	9271	1.5 (0.059)	28	10.83	320.0 (12.6)
AZ3 HVLP-S 16	9275	1.6 (0.063)	32	13.02	260.0 (10.2)
AZ3 HVLP-S 18	9272	1.8 (0.063)	32	13.02	280.0 (11.0)
AZ3 HVLP-S 20	9273	2.0 (0.079)	32	13.02	300.0 (11.8)

MODEL	GUN WITH 600ml PLASTIC CUP	NOZZLE mm (inch)	PSI	CFM	PATTERN WIDTH mm (inch)
<b>HTE2</b>					
AZ3HTE2	9234	1.3 (0.051)	29	7.0	241.3 (9.5)
AZ3HTE2	9235	1.5 (0.059)	29	7.0	254.0 (10)
AZ3HTE2	9236	1.8 (0.063)	29	7.5	304.8 (12)
AZ3HTE2	9237	2.0 (0.079)	29	7.5	342.9 (13.5)
AZ3HTE2	9238	3.0 (0.118)	44	10.5	406.4 (16)
AZ3HTE2	9239	3.5 (0.138)	44	10.5	419.1 (16.5)
<b>HV2</b>					
AZ3HV2-13GC	9230	1.3 (0.051)	28	11.0	304.8 (12)
AZ3HV2-15GC	9231	1.5 (0.059)	28	11.5	304.8 (12)
AZ3HV2-18GC	9232	1.8 (0.063)	28	13.5	304.8 (12)
AZ3HV2-20GC	9233	2.0 (0.079)	28	14.0	304.8 (12)

# PRESSURE FEED SPRAY GUNS

## LPH101-LV

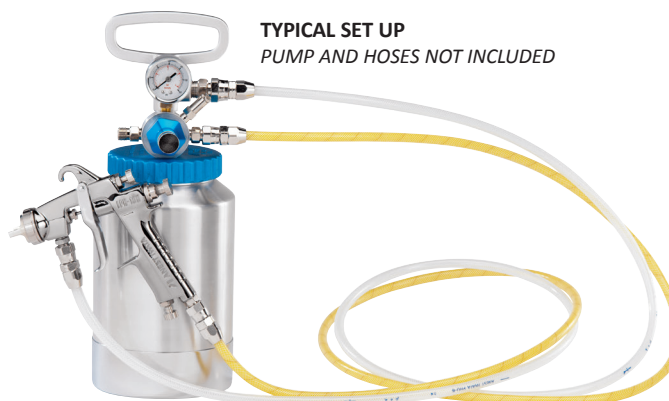


### Features

- Compact, lightweight pressure feed HVLP spray gun reduces fatigue while maintaining full size spray gun functionality
- LV Technology and tulip inspired spray pattern for superior atomization and minimal overspray for higher transfer efficiency
- Ideal for primer and DTM coatings
- Repair Service Kit Part #5650

Fluid Hose (white) #8009  
Air Hose (yellow) #8002  
Hoses are sold by the foot

1/4 inch fitting #8024  
3/8 inch fitting #8023



**TYPICAL SET UP**  
PUMP AND HOSES NOT INCLUDED

MODEL	GUN ONLY	NOZZLE mm (inch)	PSI	CFM	PATTERN WIDTH mm (inch)
<b>LPH101 PRESSURE</b>					
LPH101-081P	5310B	0.8 (0.031)	38	15.2	279 (11.0)
LPH101-101P	5313B	1.0 (0.039)	38	15.2	290 (11.4)
LPH101-122P	5325B	1.2 (0.047)	50	18.7	295 (11.6)
LPH101-131P	5316B	1.3 (0.051)	38	15.2	300 (11.8)
LPH101-151P	5319B	1.5 (0.059)	38	15.2	320 (12.6)
<b>LPH101-LV PRESSURE</b>					
LPH101-062LVP	5334B	0.6 (0.024)	25	7.1	279 (11.0)
LPH100-082LVP	5331B	0.8 (0.031)	25	7.1	290 (11.4)
LPH100-102LVP	5332B	1.0 (0.039)	25	7.1	295 (11.6)
LPH101-112LVP	5335B	1.1 (0.043)	25	7.1	335 (13.2)

# PRESSURE FEED SPRAY GUNS

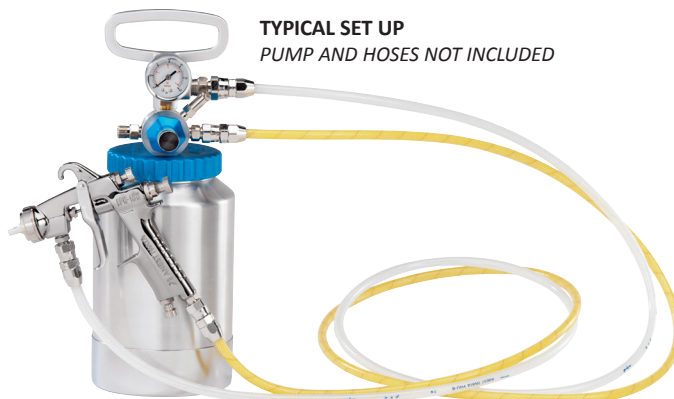
## LPH200-LV

### Features

- Heavy-duty lightweight pressure feed HVLP spray gun is supplied with a standard spray set-up for industrial applications and higher viscosity materials
- Utilizing LV technology and tulip inspired spray pattern, allowing for superior atomization with minimal overspray
- Contact Anest Iwata for additional nozzle sizes and/or materials
- LPH200LV is Ideal for fine finishing, base, single stage, and clear
- LPH200 is ideal for primer and DTM coatings
- Repair Service Kit Part #5650

Fluid Hose (white) #8009  
 Air Hose (yellow) #8002  
 Hoses are sold by the foot

1/4 inch fitting #8024  
 3/8 inch fitting #8023



MODEL	GUN ONLY	NOZZLE mm (inch)	PSI	CFM	PATTERN WIDTH mm (inch)
<b>LPH200 PRESSURE</b>					
LPH200-102P	5403	1.0 (0.039)	28	17.7	272 (10.7)
LPH200-122P	5400	1.2 (0.047)	28	17.7	300 (11.8)
LPH200-142P	5405	1.4 (0.055)	28	17.7	318 (12.5)
<b>LPH200-LV PRESSURE</b>					
LPH200-086LVP	5406	0.8 (0.031)	28	13.5	320 (12.6)
LPH200-106LVP	5407	1.0 (0.039)	28	13.5	330 (13.0)
LPH200-126LVP	5408	1.2 (0.047)	28	13.5	351 (13.8)

# SMALL DAMAGE, MICRO REPAIR

## LPH-80

### Features

- Very fine atomization with low air consumption
- Extremely low material consumption
- Smaller pattern, perfect for touch up or small surface work
- Minimal wear parts for easy maintenance
- Compatible with the 3M PPS cup system (Adapter Type 31)
- Repair Service Kit Part #2860



Optional  
2oz Plastic Cup  
SST Fluid Joint  
#9169



150ml Aluminum Cup  
SST Fluid Joint  
PCG2D-1 #6036D

MODEL	GUN WITH 150ML ALUMINUM CUP	NOZZLE mm (inch)	PSI	CFM	PATTERN WIDTH mm (inch)
LPH80-042G	4901	0.4 (0.0)	13	1.8	41 (1.6)
LPH80-062G	4906	0.6 (0.0)	13	1.8	61 (2.4)
LPH80-082G	4911	0.8 (0.0)	13	1.8	81 (3.2)
LPH80-102G	4916	1.0 (0.039)	13	1.8	99 (3.9)
LPH80-122G	4921	1.2 (0.047)	13	1.8	119 (4.7)
<b>LARGE PATTERN</b>					
LPH80-104G	4926	1.0 (0.039)	14	2.1	130 (5.1)
LPH80-124G	4931	1.2 (0.047)	14	2.1	140 (5.5)

# SMALL DAMAGE, MICRO REPAIR

## LPH-50

### Features

- High performance miniature HVLP spray gun with side mounted cup
- Superior atomization with low air consumption
- Repair Service Kit Part #2860



### OPTIONAL

Airbrush Bottle Adapter Kit with Three  
2oz. Bottles (Shown) Part #6022

Airbrush Bottle Adapter Only Part #6022-1



with optional  
aluminum  
gravity feed cup



130ml SST Cup  
PC61 #6010



250ml Aluminum Cup  
PC5 #6009

MODEL	GUN ONLY	130ml SST CUP	250ml ALUMINUM CUP	NOZZLE mm (inch)	PSI	CFM	PATTERN WIDTH mm (inch)
LPH50-042G	5261	5272	5271	0.4 (0.016)	13	1.8	41 (1.6)
LPH50-062G	5262	5274	5273	0.6 (0.024)	13	1.8	61 (2.4)
LPH50-102G	5263	5276	5275	1.0 (0.039)	13	1.8	99 (3.9)

# SMALL DAMAGE, MICRO REPAIR

## RG3L

### Features

- Round pattern spray gun for touch-up and airbrushing
- Repair Service Kit Part #2860



### OPTIONAL

Airbrush Bottle Adapter Kit with Three 2oz. Bottles (Shown) Part #6022

Airbrush Bottle Adapter Only Part #6022-1



130ml SST Cup  
PC61 #6010



250ml Aluminum Cup  
PC5 #6009

MODEL	GUN ONLY	130ml SST CUP	250ml ALUMINUM CUP	NOZZLE mm (inch)	PSI	CFM	PATTERN WIDTH mm (inch)	NOTES
RG3L-1	2805	2862	2861	0.4 (0.016)	36	1.1	25 (1.0)	
RG3L-2	2806	2864	2863	0.6 (0.024)	36	1.1	36 (1.4)	
RG3L-3	2807	2866	2865	1.0 (0.039)	36	1.8	36 (1.4)	
RG3L-11	2808	2868	2867	0.4 (0.016)	36	1.1	25 (1.0)	With Air Adjust Set
RG3L-12	2809	2870	2869	0.6 (0.024)	36	1.1	36 (1.4)	With Air Adjust Set
RG3L-13	2810	2872	2871	1.0 (0.039)	36	1.8	36 (1.4)	With Air Adjust Set

## 2 GALLON PRESSURE POT #6315

(max. 100 psi)

### Features

- Paint pressure tank with stainless steel inner tank for easy filling and trouble-free interior cleaning
- Robust construction
- Suitable for hydraulic products
- Carry handle for quick and easy transport
- Equipped with locking lid, 2 controllers, 2 pressure gauges and safety valve
- Tank capacity: 10 liter, inner tank 8.5 liter stainless steel
- Air inlet joint: G 1/4" M
- Fluid output joint: 3/8" M
- Operating temperature: 5-40 .C
- Weight: 11kg
- Dimensions: 310x310x565mm



## PC18D 2 QUART PRESSURE POT #6003B

Also available in an agitated version

### Features

- Small Paint Pressure Tank aluminum
- 2 liter
- Operating temperature: 5-40 .C
- Fluid Nipple: G 3/8" (PF3/8)



### TYPICAL SET UP

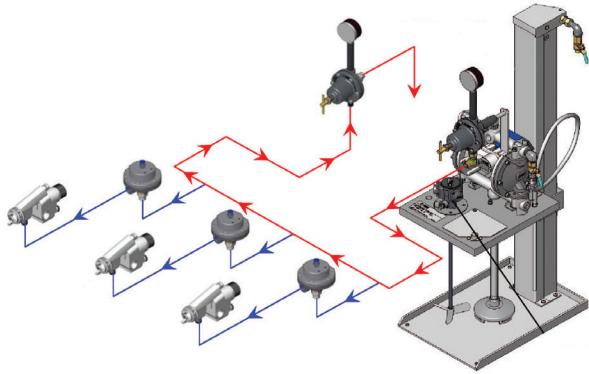
Fluid Hose (white) #8009  
Air Hose (yellow) #8002  
Hoses are sold by the foot

1/4 inch fitting #8024  
3/8 inch fitting #8023



Air/fluid hose optional lengths not shown  
SPRAY GUN NOT INCLUDED

# PUMPS



**Multiple Gun Setup For Diaphragm Pump System**  
Operating multiple guns from one pump is achieved by adding PR-5B to individual gun paint supply.

## DIAPHRAGM PUMP UNITS

### Features

- Designed for production application environment
- Stainless steel fluid passages and fluid regulator - ideal for applications requiring waterborne or solvent borne materials
- Constant fluid output
- Diaphragm movement is minimal, reducing material supply pulsation and minimizing pump wear
- Easy Handling and Installation
- Fewer number of moving parts and simple construction assures easy maintenance



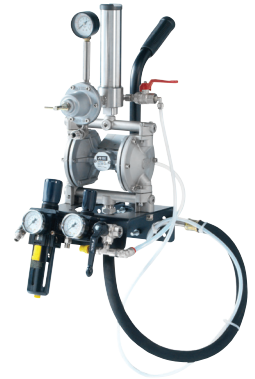
DPS901N Stainless Steel  
Stand Mount #8096  
21 x 21 x 40 in. - 35 lbs.



DPS902GN Stainless Steel  
Pail Mount #8172  
14 x 13 x 30 in. - 32 lbs.  
(contact for availability)



DPS903GN Stainless Steel  
Cart Mount #8173  
20 x 21 x 40 in. - 40 lbs.



DPS904GN  
Wall Mount #8174  
11 x 12 x 23 in. - 29 lbs.

### TYPICAL SET UP



Fluid Hose (white) #8009  
Air Hose (yellow) #8002  
Hoses are sold by the foot

Air/fluid hose optional  
lengths not shown  
SPRAY GUN NOT  
INCLUDED

PUMP SPECIFICATIONS		PUMP SPECIFICATIONS	
Pump Model	DDP90DN	Pressure Ratio	1:1
Air Inlet	1/4" BSP	Maximum Fluid Pressure	98 psi
Air Outlet (Spray Gun)	1/4" BSP	Operating Air Pressure	20 - 98 psi
Fluid Outlet	3/8" BSP	Fluid Output/Cycle	1.70 oz
Fluid Filter	100 Mesh	Max. No. of Cycles	200 Cycles/min
Fluid Passage	Stainless Steel	Maximum Fluid Output	2.64 gal/min
Fluid Regulator Model	PR5N	Max. Fluid Viscosity	300 cps
Pressure Range	0-85 psi	Fluid Temperature (F)	41° - 109°
Max. Fluid Flow	0.53 gal/min	Air Inlet	1/4" BSP
Air Regulator	2 Air Regulators (pump / spray gun)	Fluid Inlet	1/2" BSP
Suction Tube	50 Mesh Inlet Filter and Circulation Tube	Fluid Outlet	3/8" BSP





## ADG-1 Aqua Dry Waterborne Paint Dryer Gun only #7023

### Stand with 2 guns #7076

Designed for flash acceleration of waterborne basecoat. Each gun includes air shut-off valves and has rotational adjustment for directing air in various positions. The guns can be disconnected from the stand for independent use, with two adjustment points, a butterfly valve at the air inlet and a 6:1 air volume adjustment ratio on the outlet gun nozzle.

## MK-5 Professional Spray Gun Maintenance Kit #2950

The ideal accessory to ensure your spray gun maintains peak performance. Includes: Aircap cleaning pins & holder, large bottle brush, end brush and holder, five assorted detail bottle brushes down to 3/32", body brush.



## Century Series Repair Service Kit #5650



## Super Nova Repair Service Kit #5652



## Spray Gun Lubricant (10 pcs/pck) Part #8511

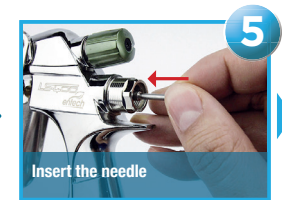
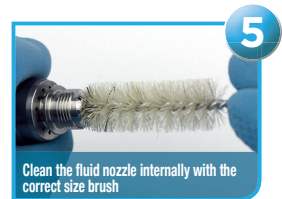
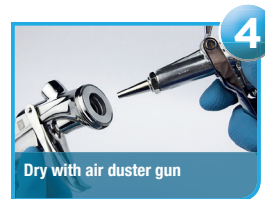
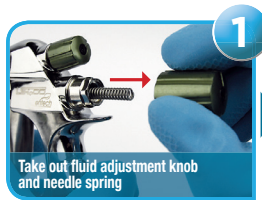


## AK-1R2 Air Regulator Part #8131B



## AK-1B2 Air Regulator Part # 8130B

# SPRAY GUN CLEANING AND MAINTENANCE



\*Pictured: Anest Iwata Air Guns Spanner Wrench. Please use the appropriate spanner wrench provided in your product packaging for all repairs.

# PART NUMBER QUICK REFERENCE

MODEL	GUN ONLY	400ml ALUMINUM CUP	600ml PLASTIC CUP	700ml ALUMINUM CUP	1000ml ALUMINUM CUP
<b>WS400 EVOTECH</b>					
WS400-1201 HD	5900	-	5901	5902	5903
WS400-OBS	5920	-	5921	5922	5923
WS400-1301 HD	5905	-	5906	5907	5908
WS400-1401 HD	5910	-	5911	5912	5913
WS400-1501 HD	5915	-	5916	5917	5918
<b>W400-LV</b>					
W400LV-124G	4750	-	4751	4752	4753
Compliant with AK-1R2	4855	-	4856	4857	4858
W400LV-134G	4755	-	4756	4757	4758
Compliant with AK-1R2	4860	-	4861	4862	4863
W400LV-144G	4760	-	4761	4762	4763
Compliant with AK-1R2	4865	-	4866	4867	4868
W400LV-164G	4765	-	4766	4767	4768
Compliant with AK-1R2	4870	-	4871	4872	4873
W400LV-184G	4770	-	4771	4772	4773
Compliant with AK-1R2	4875	-	4876	4877	4878
<b>LS400 ENTECH</b>					
LS400-1205	5930	-	5931	5932	5933
LS400-1305	5935	-	5936	5937	5938
LS400-1405	5940	-	5941	5942	5943
LS400-1505	5945	-	5946	5947	5948
<b>LPH400-LV/LVX/LVB</b>					
LPH400-124LV	5540	-	5541	5542	5543
LPH400-134LV	5640	-	5641	5642	5643
LPH400-144LV	5550	-	5551	5552	5553
LPH400-154LV	5535	-	5536	5537	5538
LPH400-164LV	5560	-	5561	5562	5563
LPH400-184LV	5570	-	5571	5572	5573
LPH400-134LVX	5660	-	5661	5662	5663
LPH400-144LVX	5670	-	5671	5672	5673
LPH400-154LVX	5680	-	5681	5682	5683
LPH400-134LVB	5700	-	5701	5702	5703
LPH400-144LVB	5705	-	5706	5707	5708
LPH400-154LVB	5710	-	5711	5712	5713
<b>LPH300</b>					
LPH300-124LV	3940	3941	-	3942	3943
LPH300-134LV	3955	3956	-	3957	3958
LPH300-144LV	3945	3946	-	3947	3948
LPH300-164LV	3950	3951	-	3952	3953
LPH300-184LV	3960	3961	-	3962	3963
LPH300-204LV	3965	3966	-	3967	3968
<b>LPH200-LV</b>					
LPH200-102P	5403	-	-	-	-
LPH200-122P	5400	-	-	-	-
LPH200-142P	5405	-	-	-	-
LPH200-086LVP	5406	-	-	-	-
LPH200-106LVP	5407	-	-	-	-
LPH200-126LVP	5408	-	-	-	-

MODEL	GUN ONLY	130ml SST CUP	GUN WITH 150ml ALUMINUM CUP	250ml ALUMINUM CUP	GUN WITH 600ml PLASTIC CUP
<b>IMPACT</b>					
AZ3 HVLP-S 13	-	-	-	-	9270
AZ3 HVLP-S 14	-	-	-	-	9274
AZ3 HVLP-S 15	-	-	-	-	9271
AZ3 HVLP-S 16	-	-	-	-	9275
AZ3 HVLP-S 18	-	-	-	-	9272
AZ3 HVLP-S 20	-	-	-	-	9273
<b>HTE2</b>					
AZ3HTE2	-	-	-	-	9234
AZ3HTE2	-	-	-	-	9235
AZ3HTE2	-	-	-	-	9236
AZ3HTE2	-	-	-	-	9237
AZ3HTE2	-	-	-	-	9238
AZ3HTE2	-	-	-	-	9239
<b>AZ3HV2</b>					
AZ3HV2-13GC	-	-	-	-	9230
AZ3HV2-15GC	-	-	-	-	9231
AZ3HV2-18GC	-	-	-	-	9232
AZ3HV2-20GC	-	-	-	-	9233
<b>LPH101-LV</b>					
LPH101-081P	5310B	-	-	-	-
LPH101-101P	5313B	-	-	-	-
LPH101-122P	5325B	-	-	-	-
LPH101-131P	5316B	-	-	-	-
LPH101-151P	5319B	-	-	-	-
LPH101-062LVP	5334B	-	-	-	-
LPH100-082LVP	5331B	-	-	-	-
LPH100-102LVP	5332B	-	-	-	-
LPH101-112LVP	5335B	-	-	-	-
<b>LPH-80</b>					
LPH80-042G	-	-	4901	-	-
LPH80-062G	-	-	4906	-	-
LPH80-082G	-	-	4911	-	-
LPH80-102G	-	-	4916	-	-
LPH80-122G	-	-	4921	-	-
LPH80-104G	-	-	4926	-	-
LPH80-124G	-	-	4931	-	-
<b>LPH-50</b>					
LPH50-042G	5261	5272	-	5271	-
LPH50-062G	5262	5274	-	5273	-
LPH50-102G	5263	5276	-	5275	-
<b>RG3L</b>					
RG3L-1	2805	2862	-	2861	-
RG3L-2	2806	2864	-	2863	-
RG3L-3	2807	2866	-	2865	-
RG3L-11	2808	2868	-	2867	-
RG3L-12	2809	2870	-	2869	-
RG3L-13	2810	2872	-	2871	-

**SALES ORDERING INFORMATION**



**Automotive Spray Equipment Technologies, LLC**

3703 Parkway Blvd, West Valley City, UT 84120

1-800-628-5449 • 801-964-6646

**[www.asetusa.com](http://www.asetusa.com)**

**Please send orders to: [orders@asetusa.com](mailto:orders@asetusa.com)**



**Anest Iwata USA, Inc.**

5325 Muhlhauser Road, Hamilton, Ohio 45011

Tel: 513-755-3100 • Toll Free: 800-440-0282

**[www.anestiwata.com](http://www.anestiwata.com)**