

Performance Spray Gun

26778 • 26832 • 26878

Technical Data

April 2020

3M Part Numbers	3M Part Descriptor
26778	3M(TM) Performance Spray Gun System with PPS(TM) 2.0
26832	3M(TM) Performance Spray Gun
26878	3M(TM) Performance Industrial Spray Gun System

Product Description

Lightweight and easy to use, the 3M™ Performance Spray Gun was built for the modern painter. Capable of spraying a wide range of coatings from either a pressure-fed source or attached gravity cup, its impact-resistant composite body makes it one of the lightest spray guns available, yet it is durable enough for demanding industrial and automotive conditions.

With its versatile design, technicians can spray from either a pressure or gravity sources. The pressure-fed hose and nozzles allow for continuous bulk spraying for larger jobs. Or for spot repairs and small areas, convert the spray gun to use the 3M™ PPS™ Series 2.0 Spray Cup System – so you use just the right amount of coating to match the size and finish of the job.

Simple, innovative design means fewer parts to maintain. With quick-change replaceable nozzles, paint never passes through the body of the spray gun. Cleanup can be as simple as wiping the tip of the needle and replacing the head – which means no more disassembling or soaking in solvent.

It's like getting a brand-new spray gun every time you put on a fresh nozzle. At sizes from 1.1 to 2.0, 3M™ Performance Atomizing Heads allow you to easily spray a wide range of coatings – from stains and primers to topcoats and even adhesives. The spray gun's intuitive design means it's ready to help technicians spray right out of the box – whether you're a seasoned pro or if it's your first day on the job.

Product Uses

- 3M™ Performance Spray Gun can be used with a wide variety of sprayable coatings and adhesives.
- The following components are available for use with the Performance Spray Gun

3M™ Performance Spray Gun

26778 • 26832 • 26878

Product Uses, cont.

1 Replacement Parts

Part No.	Product
26833	Pressure Whip
26839	Ball Valve
26835	Locking Collar
26840	Rebuild Kit
26834	Whip Pin
26838	Needle

2 Atomizing Head Refill Kits

Part No.	Color	Size
Pressure		
26811	Yellow	1.1
26814	Orange	1.4
26818	Clear	1.8
26830	Variety Kit	3 sizes (1.1, 1.4, 1.8)
Gravity		
26712	Blue	1.2
26713	Green	1.3
26714	Orange	1.4
26716	Purple	1.6
26718	Clear	1.8
26720	Red	2
26730	Variety Kit	6 sizes (1.2, 1.3, 1.4, 1.6, 1.8, 2.0)

3 3M™ PPS™ Series 2.0 Spray Cup System Kit - PN 26000

(*additional sizes available)

For more information on PPS™ Series 2.0, please refer to the following website:

https://www.3m.com/3M/en_US/company-us/all-3m-products/~/3M-PPS-Series-2-0-Spray-Cup-System-Kit/

3M™ Performance Spray Gun

26778 • 26832 • 26878

Performance Properties

Performance Spray Gun with Gravity Nozzles	
Air Consumption	370 SLPM [13 SCFM]
Recommended Air Inlet Pressure	1.38 Bar [20 psi]
Maximum Operating Temperature	50 °C [122 °F]
Maximum Operating Overpressure	10 Bar [145 psi]
Weight	238 g [8.4 oz]
Air Inlet	1/4 BSP/NPS
Nozzle Orifice Sizes	1.2, 1.3, 1.4, 1.6, 1.8, 2.0 mm

Performance Spray Gun with Pressure Nozzles	
Air Consumption	370 SLPM [13 SCFM]
Recommended Air Inlet Pressure	1.24 Bar [18 psi]
Maximum Operating Temperature	50 °C [122 °F]
Maximum Operating Overpressure	10 Bar [145 psi]
Weight	378 g [13.3 oz]
Air Inlet	1/4 BSP/NPS
Liquid Inlet	3/8 BSP/NPS
Nozzle Orifice Sizes	1.1, 1.4, 1.8, mm

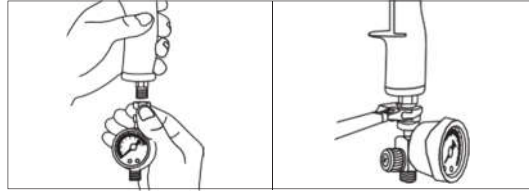
3M™ Performance Spray Gun

26778 • 26832 • 26878

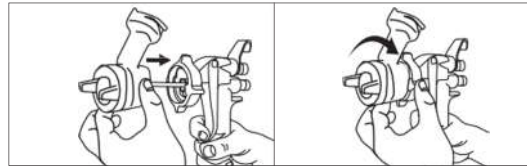
Directions for Use

Gravity Assembly

- 1 Attach the supplied air flow valve to the bottom of the gun.



- 2 Attach the nozzle to the spray gun with the locking collar fully connected.
Note: It is easier to install the nozzle while pulling the trigger backward toward the spray gun handle. To remove the nozzle from the spray gun, reverse the process.



- 3 Attach 3M™ PPS™ Series 2.0 spray cup to nozzle.



- 4 Once the spray gun is properly assembled you may attach the air line

Nozzle Recommendation

*Starting points only, refer to Paint Manufacture for recommendation on fluid tip size

	2.0	1.8	1.6	1.4	1.3	1.2
High Viscosity Coatings	●	●				
Sprayable Fillers	●	●				
High Build Primer		●	●	●		
Primer Surfacer		●	●	●		
Wet on Wet Primer				●	●	
Primer Sealer				●	●	
Direct Gloss				●		
Single Stage Top Coat				●		
Solvent Base Color				●	●	
Clearcoat				●	●	●
Waterborne Base Coat					●	●

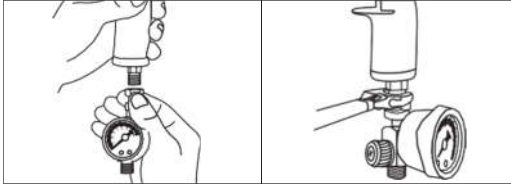
3M™ Performance Spray Gun

26778 • 26832 • 26878

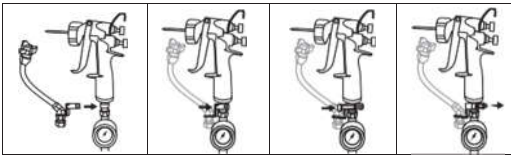
Directions for Use, cont.

Pressure Assembly

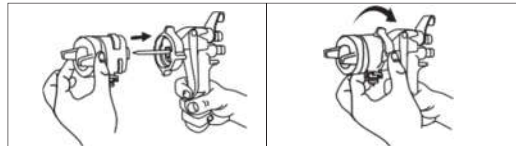
- 1 Attach the supplied air flow valve to the bottom of the gun.



- 2 Attach Fluid Hose Pressure Whip to base of spray gun.



- 3 Attach the nozzle to the spray gun with the locking collar fully connected.
Note: It is easier to install the nozzle while pulling the trigger backward toward the spray gun handle



- 4 Connect Pressure Whip to nozzle.



- 5 Attach fluid and pressure lines from bulk feed system (or pressure pot)
Note: Utilize the optional manual fluid shut-off valve, if desired, between hose whip and fluid supply

Nozzle Recommendation

*Starting points only, refer to Paint Manufacture for recommendation on fluid tip size.

	1.1	1.4	1.8
Textured Paints	●	●	●
1K Top Coats	●	●	
2K Top Coats	●	●	
Base Coat / Single Stage Materials	●		
Clear Coats	●	●	
Epoxy / Urethanes Primers	●	●	●
Adhesives		●	●
Release Agents	●		

3M™ Performance Spray Gun

26778 • 26832 • 26878

Directions for Use, cont.

Cleaning

Pressure

1. Once the system is adequately flushed (pot, lines), depressurize the system (or close the optional fluid valve)
2. After pressure is relieved, remove the hose whip from the nozzle.
3. Remove nozzle from spray gun to clean residue from the nozzle. Rinse out and flush cleaning solvent through the nozzle with fluid tip pointed straight down into receptacle to collect waste solvent.
4. Wipe needle tip. Store spray gun with a nozzle attached to protect the needle.

Gravity

1. Once coating application is complete, disconnect the air hose from the gun.
2. To drain back paint into cup - Invert cup, pull trigger, and tap the PPS™ cup on a table 3 times.
3. Rinse out nozzle spout and flush cleaning solvent through the nozzle by pulling trigger with fluid tip pointed straight down into receptacle to collect waste solvent.
4. Store spray gun with a nozzle attached to protect the needle.

WARNING! Do not immerse spray gun or nozzles in cleaning solvents or gun washers. The maximum operational air pressure of this spray gun is listed on the face of each replacement nozzle

Applications

Primers, Sealers, Basecoats, Clear-Coats, Single-Stage Materials, Adhesives, and more

Storage and Handling

- Ensure equipment is cleaned prior to storage.
- Store spray gun with a nozzle attached to protect the needle.

Precautionary Information

Before using this product, reference and understand the Product Label and Product Manual for Health and Safety Information. Consult all Safety Data Sheets for chemical material used with this product. Follow all federal, state and local regulations for use and disposal of all items/products associated with the use of this product.

3M™ Performance Spray Gun

26778 • 26832 • 26878

Technical Information

The technical information, guidance, and other statements contained in this document or otherwise provided by 3M are based upon records, tests, or experience that 3M believes to be reliable, but the accuracy, completeness, and representative nature of such information is not guaranteed. Such information is intended for people with knowledge and technical skills sufficient to assess and apply their own informed judgment to the information. No license under any 3M or third party intellectual property rights is granted or implied with this information.

Product Selection and Use

Refer to Paint Manufacture for recommendation on fluid tip size refer to your paint company for nozzle tip recommendation.

Warranty, Limited Remedy and Disclaimer

Unless a different warranty is specifically stated on the applicable 3M product packaging or product literature (in which case such warranty governs), 3M warrants that each 3M product meets the applicable 3M product specification at the time 3M ships the product. 3M MAKES NO OTHER WARRANTIES OR CONDITIONS, EXPRESS OR IMPLIED, INCLUDING, BUT NOT LIMITED TO, ANY IMPLIED WARRANTY OR CONDITION OF MERCHANTABILITY, FITNESS FOR A PARTICULAR PURPOSE, OR ARISING OUT OF A COURSE OF DEALING, CUSTOM, OR USAGE OF TRADE. If a 3M product does not conform to this warranty, then the sole and exclusive remedy is, at 3M's option, replacement of the 3M product or refund of the purchase price.

Limitation of Liability

Except for the limited remedy stated above, and except to the extent prohibited by law, 3M will not be liable for any loss or damage arising from or related to the 3M product, whether direct, indirect, special, incidental, or consequential (including, but not limited to, lost profits or business opportunity), regardless of the legal or equitable theory asserted, including, but not limited to, warranty, contract, negligence, or strict liability.



Automotive Aftermarket Division
3M Center, Building 0223-6-S-07
St. Paul, MN 55144-1000
1-877-666-2277 (1-877-MMM-CARS)
3MCollision.com

3M and PPS are trademarks of 3M Company.
Printed in U.S.A. © 3M 2020 All rights reserved (04/20)